

SCHEDA TECNICA – GILET JIM HI-VIS REVERSIBILE

COD. HH233

ROSSINI.
TECH

CE

II^a categoria
EN ISO 13688:2013+A1:2021

EN ISO 20471:2013+A1:2016
CLASSE 2

50 LAVAGGI

TESSUTO

ESTERNO ALTA VISIBILITÀ: 100% poliestere irrestringibile

INTERNO: poliestere trapuntato a rombi

DESCRIZIONE

Gilet alta visibilità reversibile con 5 tasche, porta badge nella tasca superiore, chiusura centrale con zip YKK, tessuto interno imbottito quilty.

TAGLIE

S, M, L, XL, XXL, XXXL, 4XL



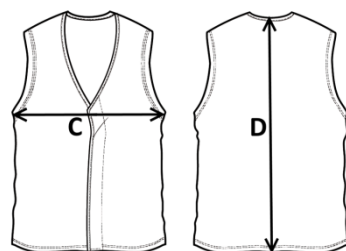
42 - GIALLO/BLU



21 - ARANCIO/BLU




21 - ARANCIO/BLU



Il margine di tolleranza produttivo, nel rispetto delle dimensioni della taglia, può essere del +/- 3%

SIZE - cm	S	M	L	XL	XXL	XXXL	4XL
C - ½ CIRCONFERENZA TORACE	56	58	60	63	67	70	74
D - LUNGHEZZA CENTRO DIETRO	69	71	73	75	77	79	81


 **TECHNICAL SHEET – HI-VIS JIM REVERSIBLE VEST**

CODE HH233

ROSSINI.
TECH

CE

2ND CATEGORY
EN ISO 13688:2013+A1:2021

 EN ISO 20471:2013+A1:2016
CLASS 2

50 WASHES



21 - ORANGE/BLUE



FABRIC

OUTER HIGH VISIBILITY: 100% unshrinking polyester

INNER: quilted polyester

DESCRIPTION

High visibility reversible vest with 5 pockets, badge holder in the chest pocket, YKK zip front closure, inside quilted fabric.



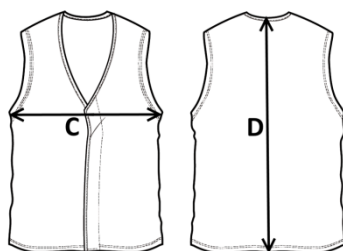
42 - YELLOW/BLUE



21 - ORANGE/BLUE

SIZES

S, M, L, XL, XXL, XXXL, 4XL



Measurements may vary +/- 3%, tolerance within size scale

SIZE - cm	S	M	L	XL	XXL	XXXL	4XL
C – ½ CHEST CIRCUMFERENCE	56	58	60	63	67	70	74
D – CENTER BACK LENGTH	69	71	73	75	77	79	81

 FICHA TÉCNICA – CHALECO JIM HI-VIS REVERSIBLE

CÓD. HH233

rossini.
TECH



IIª categoría
EN ISO 13688:2013+A1:2021



EN ISO 20471:2013+A1:2016
CLASE 2

50 LAVADOS

COMPOSICIÓN

EXTERNO ALTA VISIBILIDAD: 100% poliéster sanforizado

INTERIOR: poliéster acolchado de rombos

DESCRIPCIÓN

Chaleco de alta visibilidad reversible con 5 bolsillos, porta tarjeta de identificación en el bolsillo superior, cierre central de cremallera YKK, tejido interno acolchado quilty.

TALLAS

S, M, L, XL, XXL, XXXL, 4XL



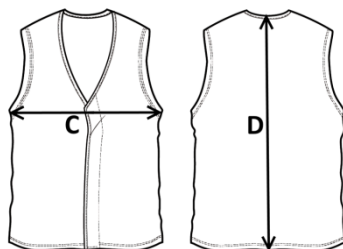
42 - NARANJA/AZUL



21 - AMARILLO/AZUL



21 - AMARILLO/AZUL



El margen de tolerancia productiva, respetando las dimensiones de la talla, puede ser de +/- 3%

SIZE - cm	S	M	L	XL	XXL	XXXL	4XL
C – ½ CIRCUNFERENCIA TORÁCICA	56	58	60	63	67	70	74
D – LONGITUD CENTRAL ESPALDA	69	71	73	75	77	79	81

FISA TEHNICA – VESTĂ JIM HI-VIS REVERSIBILĂ

COD. HH233

ROSSINI.
TECH

CE

Categoria II
EN ISO 13688:2013+A1:2021



EN ISO 20471:2013+A1:2016
CLASA 2

50 SPĂLĂRI

MATERIAL

EXTERIOR ÎNALTĂ VIZIBILITATE: 100% poliester care nu intră la apă

INTERIOR: poliéster acolchado de rombos

DESCRIERE

Vestă de înaltă vizibilitate reversibilă cu 5 buzunare, suport pentru badge la buzunarul de la piept, închidere centrală cu fermoar YKK, interior material matlasat.

MĂRIMI

S, M, L, XL, XXL, XXXL, 4XL



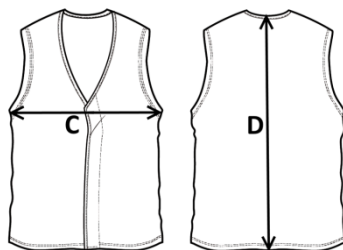
42 –
GALBEN/BLEUMARIN



21 –
PORTOCALIU/BLEUMARIN



21 – PORTOCALIU/BLEUMARIN



Marja de toleranță a producției, respectând dimensiunile mărimii, poate fi de +/-3%.

SIZE - cm	S	M	L	XL	XXL	XXXL	4XL
C – ½ CIRCUMFERINȚĂ TORACE	56	58	60	63	67	70	74
D – LUNGIME SPATE	69	71	73	75	77	79	81

FICHE TECHNIQUE – GILET JIM HI-VIS RÉVERSIBLE

CODE HH233

rossini.
TECH

CE

2e catégorie
EN ISO 13688:2013+A1:2021

EN ISO 20471:2013+A1:2016
CLASSE 2

50 LAVAGES

TISSU

EXTÉRIEUR HAUTE VISIBILITÉ: 100% polyester non rétrécissable.

INTÉRIEUR: polyester matelassé en losanges

DESCRIPTION

Gilet haute visibilité réversible avec 5 poches, porte-badge dans la poche poitrine, fermeture centrale avec fermeture Éclair YKK, intérieur en tissu matelassé en losanges.

TAILLES

S, M, L, XL, XXL, XXXL, 4XL



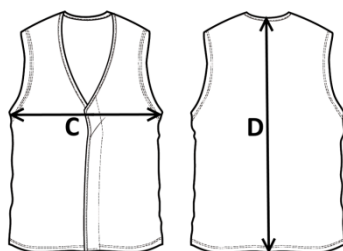
42 - JAUNE/BLEU



21 - ORANGE/BLEU



21 - ORANGE/BLEU



La marge de tolérance de production, dans le respect des dimensions de la taille, peut être de +/- 3 %

SIZE - cm	S	M	L	XL	XXL	XXXL	4XL
C – ½ TOUR DE POITRINE	56	58	60	63	67	70	74
D – LONGUEUR CENTRE ARRIÈRE	69	71	73	75	77	79	81